

WAVES CHANDELIER

INSTALLATION GUIDE



WAVES CHANDELIER

NOTICE:

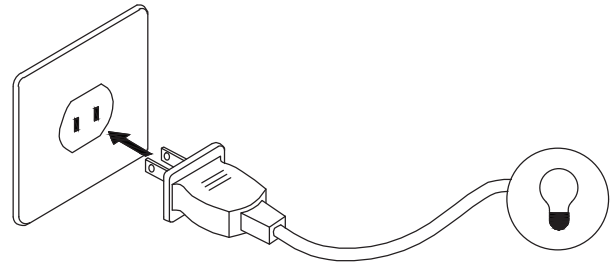
This light fixture should be installed in accordance with all applicable, local installation codes, and by a person familiar with the construction and operation of it, as well as the hazards involved. Inspect the item and contents carefully. If any damage or defect is found, do not install. Retain all packaging material until installation is complete and approved.

BEFORE YOU BEGIN

- Have the chandelier installed by a qualified electrician, following local electrician codes.
- Switch off power at the breaker before starting, and use a voltage tester to confirm there is no live current.
- Make sure the ceiling structure or junction box can support at least twice the chandelier's total weight.
- Check the LED driver for dimmer compatibility before installation

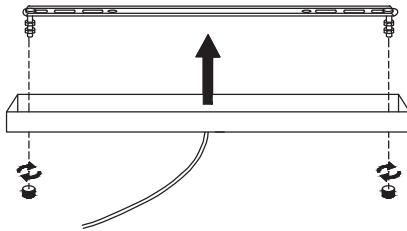
1. Pre-Test the Fixture

- Temporarily connect to a safe power source to check all LEDs.
- Disconnect after confirming they work.



2. Prepare the Work Area

- Clear the space under the installation area.
- Lay a drop cloth to catch any falling hardware.
- Identify a helper if fixture size or weight requires two people.

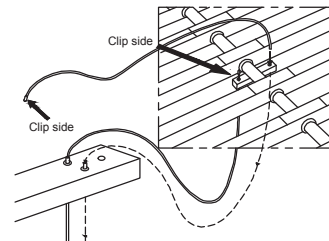


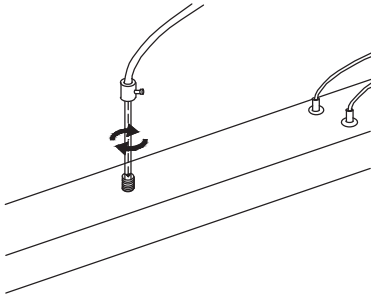
3. Remove Mounting Bracket

- Loosen nuts on both sides of the canopy and detach bracket.
- Keep hardware organized for re-use.

4. Attach LED Sticks to Base

- Align connectors to the base and LED sticks.
- Firmly connect each one; listen/feel for a secure click.
- Route wires neatly to avoid pinching later.



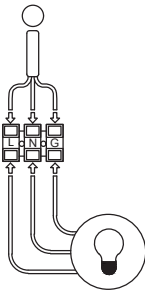
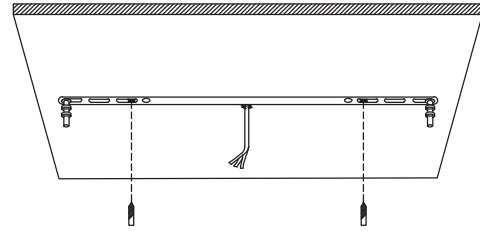


5. Secure Cable Nuts to Base

- Connect ground (green/yellow) to ground.
- Connect hot (black/brown) to supply hot, neutral (white/blue) to supply neutral.
- For dimming, connect control leads as required: cap unused leads.
- Keep AC and low-voltage wires separated.

6. Fix Mounting Bracket to Ceiling

- Hold bracket level to the ceiling, mark hole positions.
- Drill pilot holes and secure with screws appropriate for your substrate.
- If using anchors, confirm they are rated for the load.

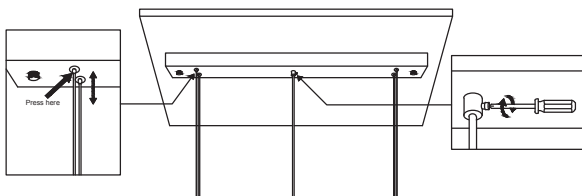
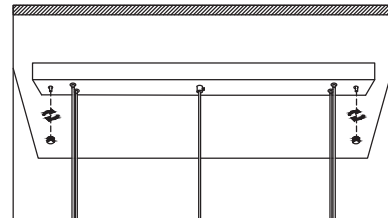


7. Make Electrical Connections

- Connect ground (green/yellow) to building ground.
- Connect hot (black/brown) to supply hot, neutral (white/blue) to supply neutral.
- Keep AC and low-voltage wiring separate.
- For dimming, connect control wires as specified; cap unused leads.

8. Attach Canopy & Secure Fixture

- Lift canopy over bracket, align holes, and fasten using nuts on all sides.
- Double-check that no wires are pinched.



9. Adjust Suspension Height

- Press gripper tabs to raise/lower each cable to final height.
- Check with a level from multiple angles.

10. Rotate LED Sticks for Final Arrangement

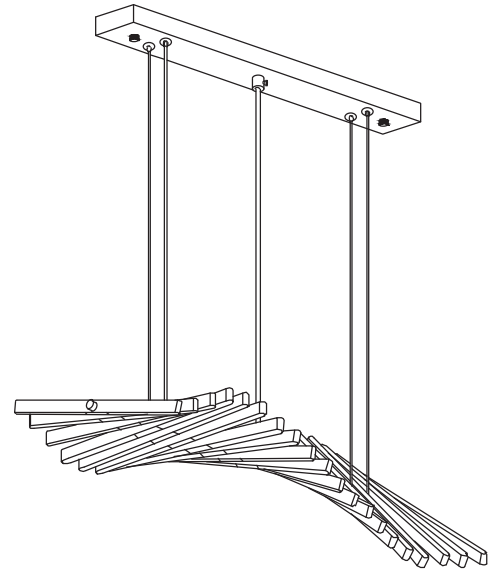
- Adjust each stick for symmetry and design intent.
- Avoid over-rotating to prevent strain on connectors.

11. Final Cleaning & Inspection

- Remove any protective film.
- Clean surfaces with microfiber cloth.
- Confirm all hardware is tight and the fixture is level.

12. Power-On Test

- Restore power and test at full brightness.
- Cycle through dimming range to check smooth operation.





WARRANTY INFORMATION

Damages or Issues:

- Start a return/exchange online and mark the item as damaged
- After 30 days, coverage applies only with an extended warranty
- Submit photos/videos — we'll assess and offer a replacement

Standard Warranty

All fixtures are covered for manufacturer defects for 30 days.
Contact us with proof for a free replacement.

Extended Warranty

Available for 12, 36, or 60 months. Includes:

- Free instant replacements
- Accident & manufacturer protection
- Component coverage (excludes bulbs)

Contacts



Shop Online at
www.residencesupply.com



Follow our Instagram
[@residencesupply](https://www.instagram.com/residencesupply)



24/7 Customer Service
+1 (800)-791-7436

RESIDENCE
SUPPLY